

offers many forms of support and education

## Family-to-Family

*A free 12-week course for family caregivers of individuals with severe mental illness. Discussion covers clinical treatment options and effective skills so family members can cope more effectively.*

*\* Register anytime for upcoming classes.*



## Connection

*A free recovery support program for adults living with mental illness. Designed for sharing experiences and coping strategies, as well as offering encouragement and understanding.*

**Connection Recovery Support Groups are held:**

- 1. Every Wednesday 7-8:30 PM**  
Medical Center of Trinity West  
Pasco Campus, Conference Room  
5637 Marine Parkway,  
New Port Richey, FL 34652  
(727) 992-9653
- 2. Every 1st & 3rd Saturday 11:30 AM-1 PM**  
Prevention Counseling Center  
13743 U.S. 98 Bypass  
Dade City, FL 33525  
(352) 556-9849

## Crisis Intervention

*Designed for law enforcement officers, this 40-hour training teaches how to respond to people in a mental health crisis. Contact NAMI Pasco for the next available class.*



## Education Meetings

*Join NAMI Pasco the first Monday of every month for a variety of speakers and topics related to mental health and recovery. Find more details on our website: [www.namipasco.org](http://www.namipasco.org)*



## NAMI PASCO Peer-to-Peer

*NAMI Peer-to-Peer is a unique, experimental learning program for people living with a mental illness who are interested in establishing and maintaining their wellness and recovery. A free 10-week course for individuals with a mental illness is taught by trained peers. Find out more about how others have coped with stigma, fear, and much more.*

*\* Register anytime for upcoming classes.*



## Family Support Group

*A free, confidential, peer-facilitated meeting designed to help family, friends and caregivers who have a loved one with a mental illness. Join us for sharing experiences and local resources with compassion.*

## No-Cost Meetings

- 1. 1st & 3rd Thursday 6:30 – 8 PM**  
Regional Medical Center  
Bayonet Point  
Shoreline Café Meeting Room  
14000 Fivay Road,  
Hudson, FL 34677
- 2. 2nd & 4th Monday 7:30 – 9 PM**  
Medical Center of Trinity, West  
Pasco Campus, Conference Room  
5637 Marine Parkway,  
New Port Richey, FL 34652
- 3. 1st & 3rd Tuesday 7 – 8:30 PM**  
Atonement Lutheran Church  
29617 State Road 54  
Wesley Chapel, FL 33543

*\* For questions, please call (727) 992-9653.*



Join



National Alliance on Mental Illness

Pasco County

Name \_\_\_\_\_

Address \_\_\_\_\_

City \_\_\_\_\_ State \_\_\_\_\_ Zip \_\_\_\_\_

Phone \_\_\_\_\_

Email \_\_\_\_\_

### Yearly Membership Levels

\$35 Regular

\$3 Open Door

or by Donation \_\_\_\_\_

Our committed

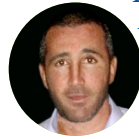
## Board of Directors



Heather O'Dell



Nikki Drake



Billy Major



Gloria Strother

Volunteers are always needed and appreciated. Come share your talents and expertise.

Support.Education.Advocacy  
NAMI Pasco County Florida, Inc.  
P.O. Box 412 Elfers, FL. 34680

A 501(c)3 Not-for-Profit Corporation



Join online at [www.nami.org](http://www.nami.org) and select **NAMI Pasco** as your affiliate of choice.

NAMI Pasco members automatically become voting members at the national, state, and local NAMI levels. Members are placed on the local affiliate's email information distribution list, receive NAMI national Advocate magazine, and enjoy discounts on conferences and literature from the NAMI store at [www.nami.org](http://www.nami.org)

**NAMI Pasco** gratefully acknowledges Vincent House members and staff for producing & printing our affiliate brochure. Learn more at [vincenthouse.org](http://vincenthouse.org)

Groups do not generally meet if that day falls on a holiday. For further information, and to confirm location and time of all local groups, please call:

**(727) 992-9653**

or visit the website calendar at [www.namipasco.org](http://www.namipasco.org)



National Alliance on Mental Illness

Pasco County